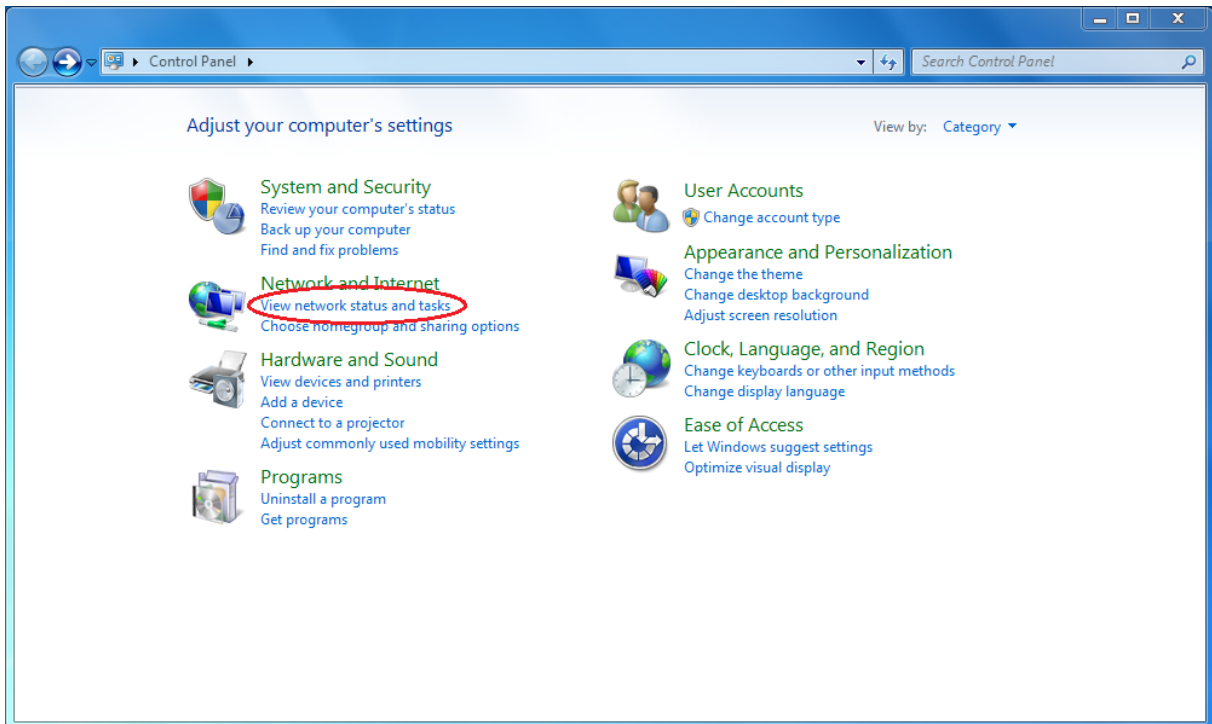


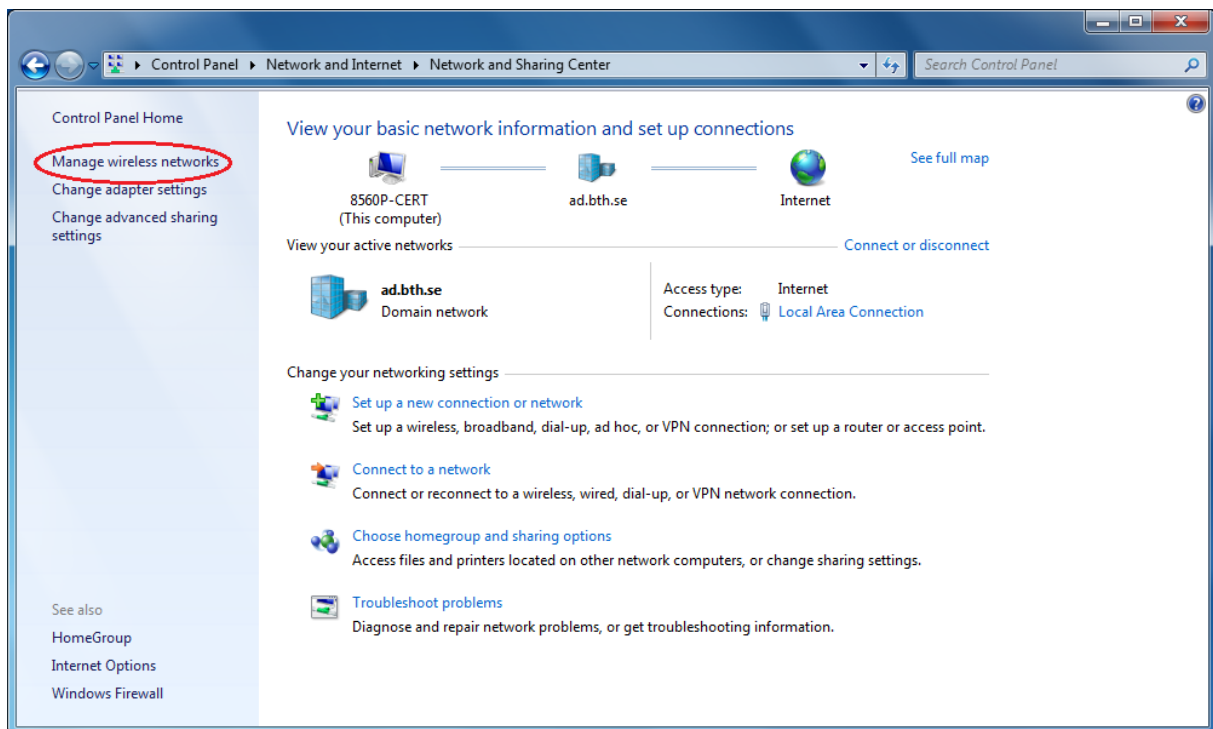
# Eduroam for Windows 7

The manual is written for an English installation of Windows 7.

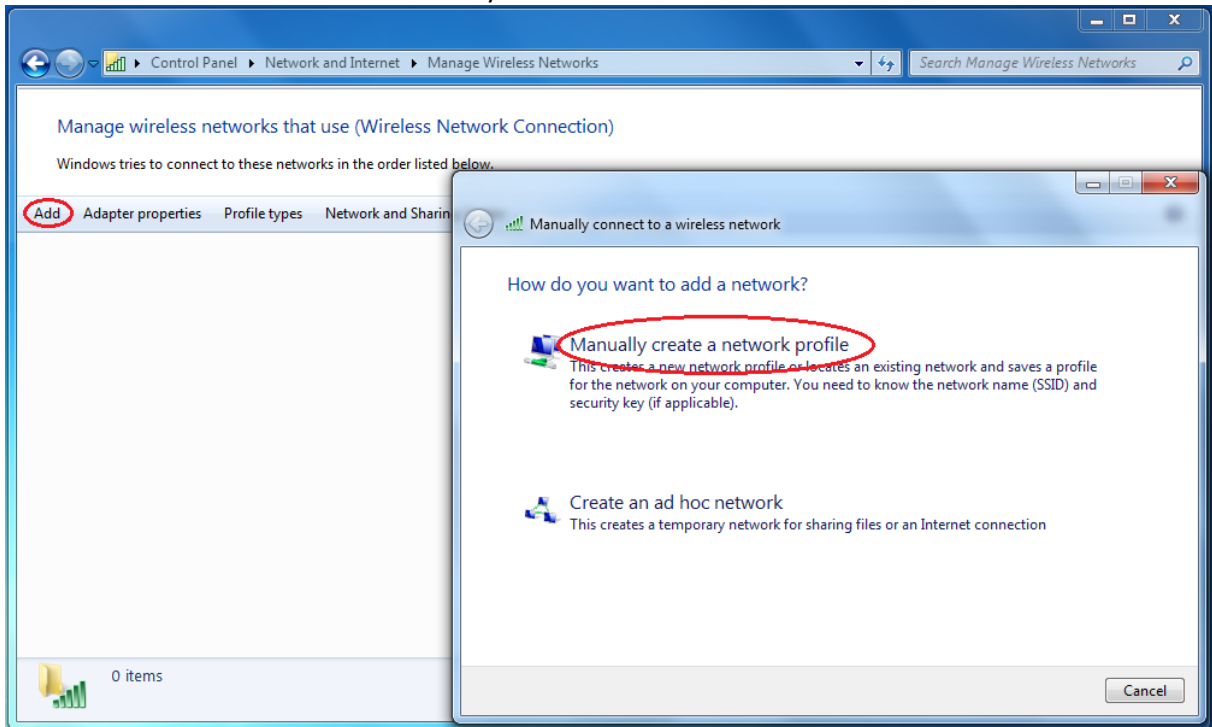
1. Go to “Start” -> “Control Panel” -> “View network status and tasks”



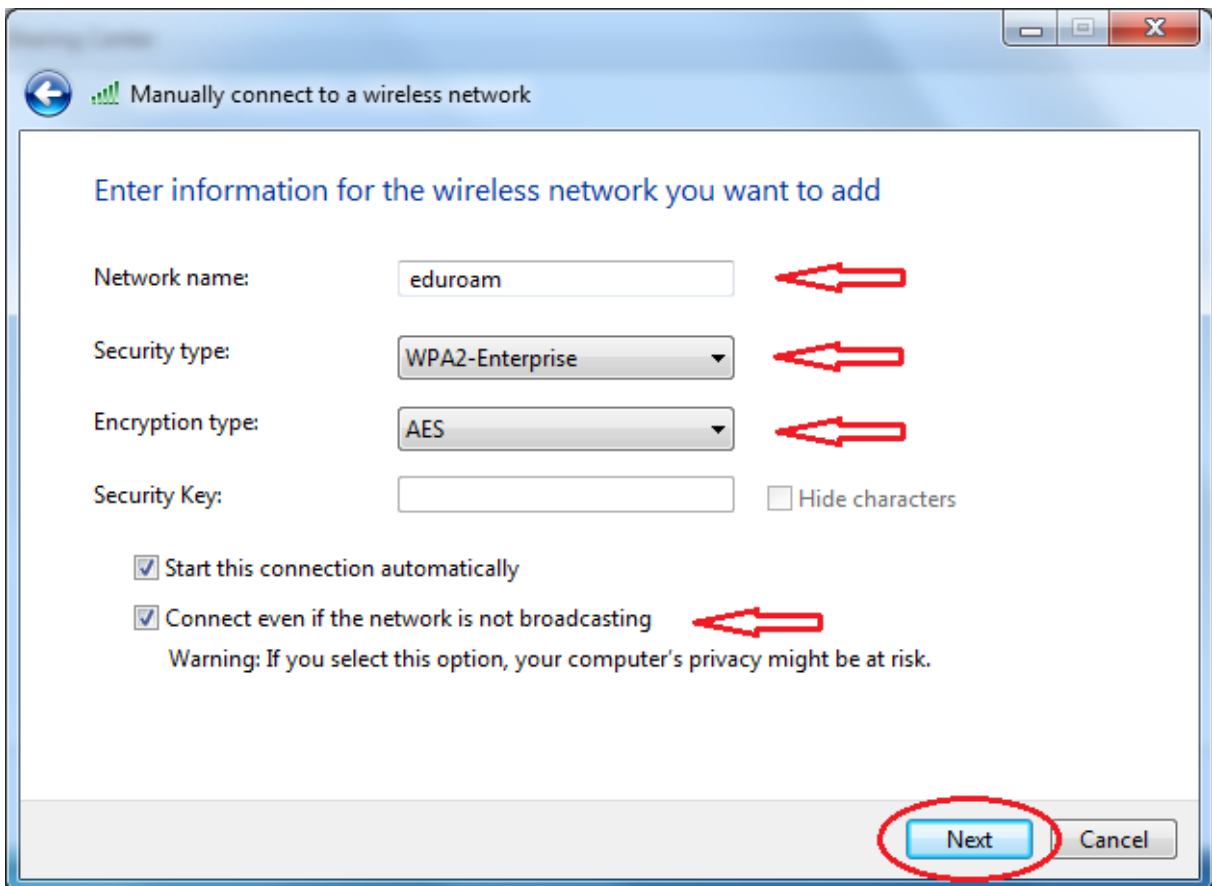
2. Choose “Manage wireless networks”



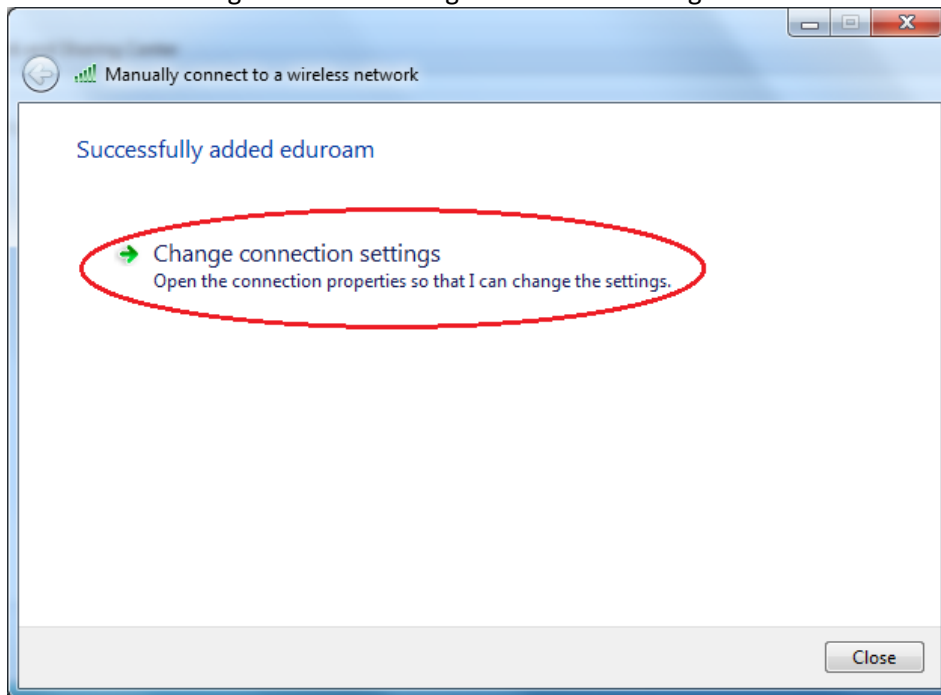
3. Select "Add" and then "Manually connect to a wireless network"



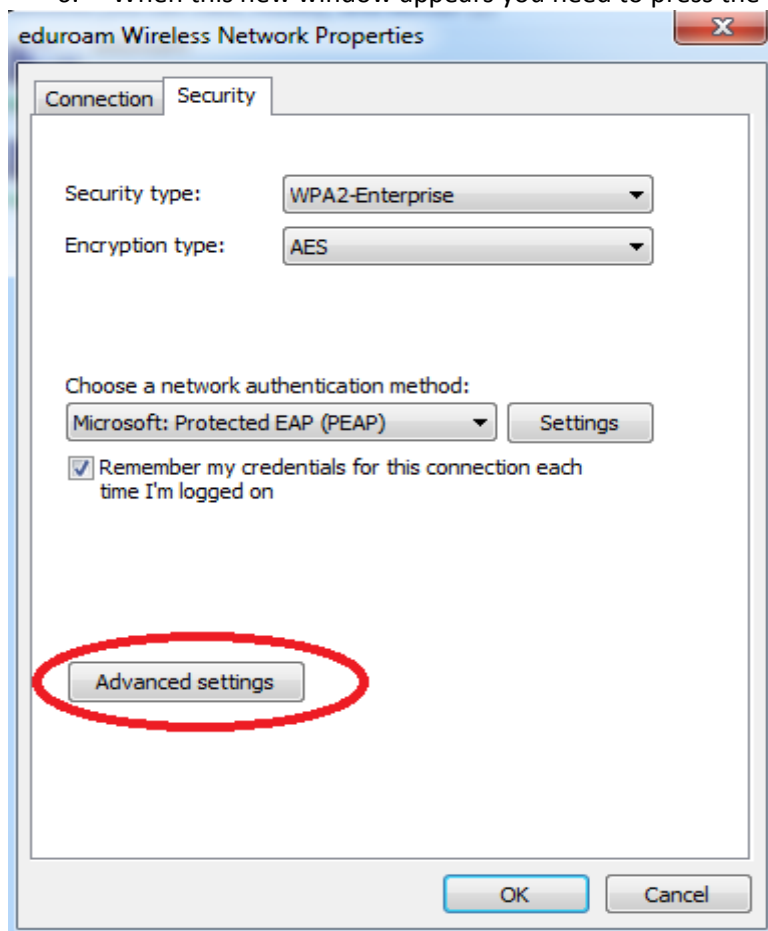
4. "Network name" should be *eduroam*. "Security type" is set to *WPA2-Enterprise* and "Encryption type" is *AES*. Also select "Connect even if network is not broadcasting". Click "Next"



5. Next page will tell you that you have succeeded, but there are a few more things that need to be configured. Click "Change connection settings".

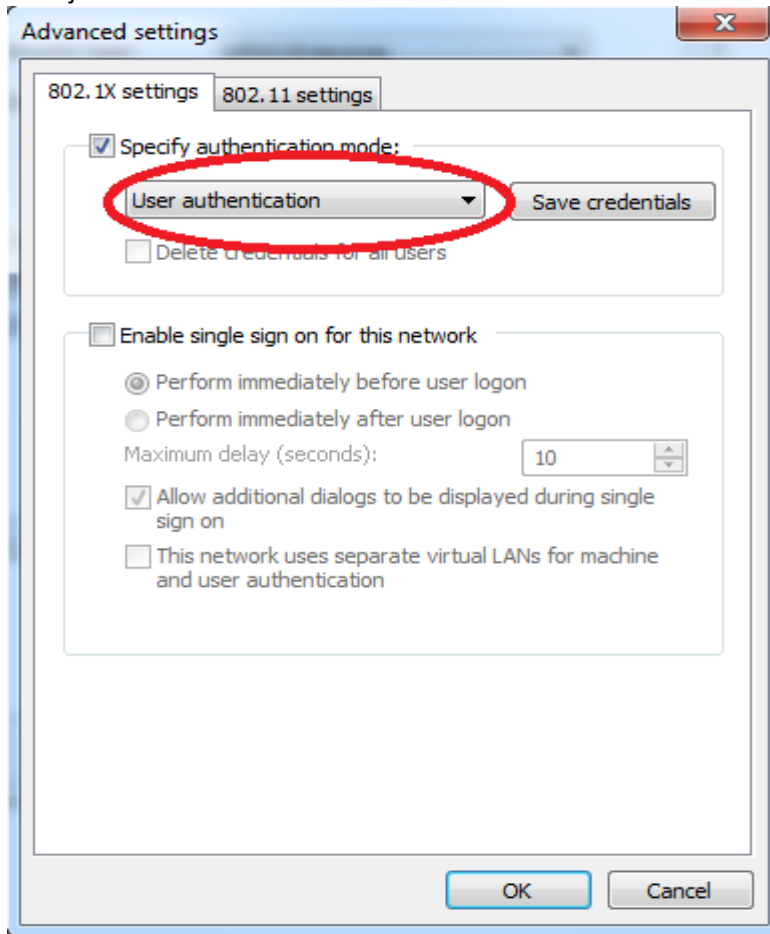


6. When this new window appears you need to press the "Advanced Settings" button.

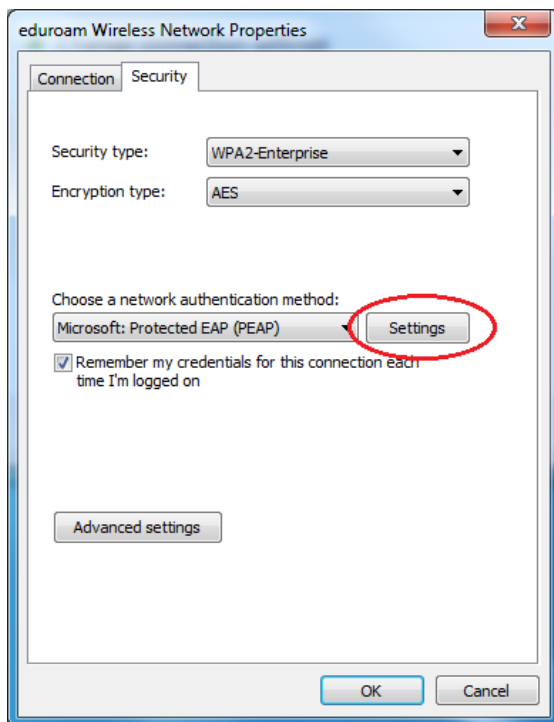


7. Here you have to change the Authentication mode.  
To do that you simply choose the "User Authentication" option from the scroll-down list.  
When you've accomplished that you simply press the "OK" button, located at the end of the window.

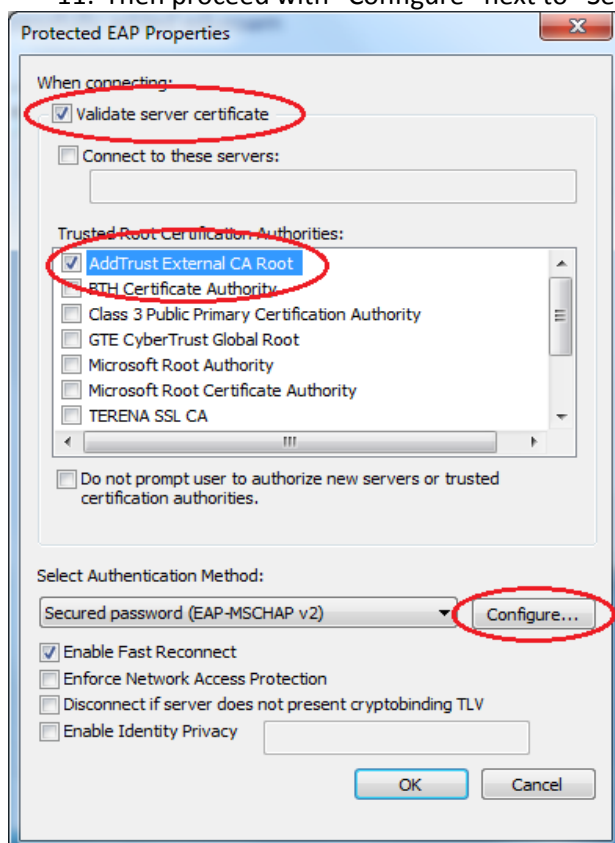
Now just follow the directions below.



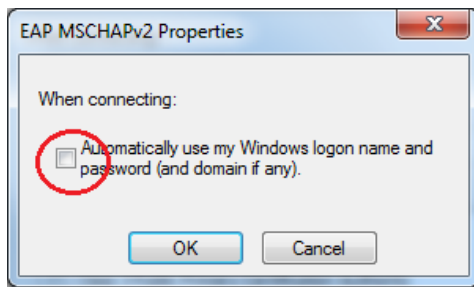
8. The first tab shows what you have already filled in. Under the tab "Security" choose "Settings".



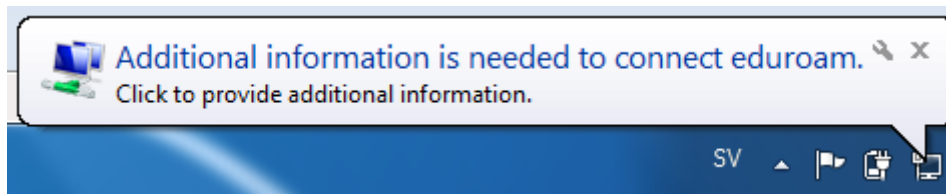
9. In the window "Protected EAP Properties" select "Validate Server Certificate".
10. Choose "AddTrust External CA Root" under "Trusted Root Certification Authorities".
11. Then proceed with "Configure" next to "Secured password"



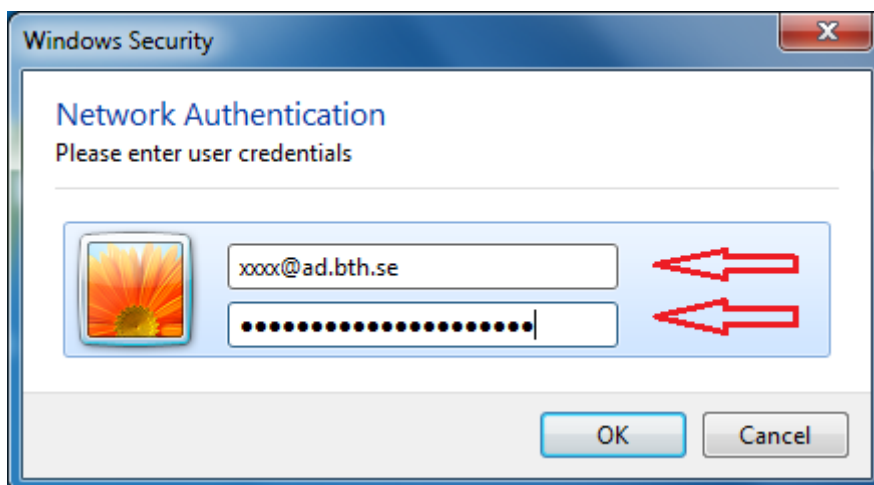
12. Under "EAP MSCHAPv2 Properties" the choice "Automatically use my Windows logon name and password (and domain if any)" should be unselected.



13. Select "OK" three times to get out of configuration



14. At the bottom right, left of the wireless network icon, a yellow text box will show up with the heading "Wireless Network Connection". Click on it, and a login window will appear.



15. "User name" is your user id followed by @ad.bth.se or @students.ad.bth.se. "Password" is your AD domain password. Then click OK.
16. You should now be connected to eduroam.