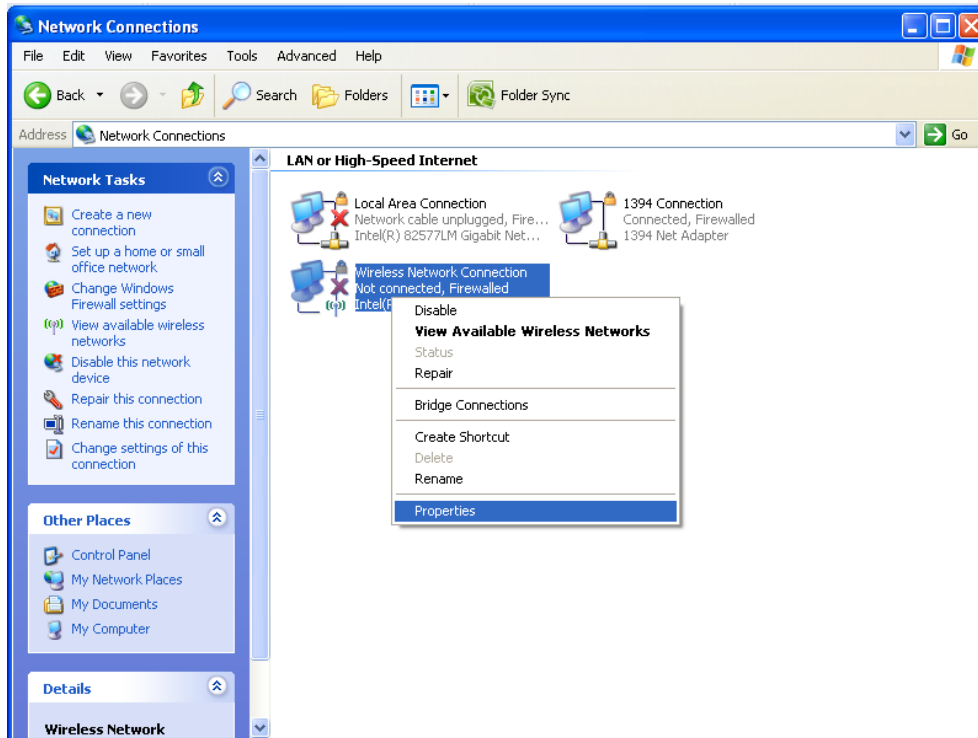


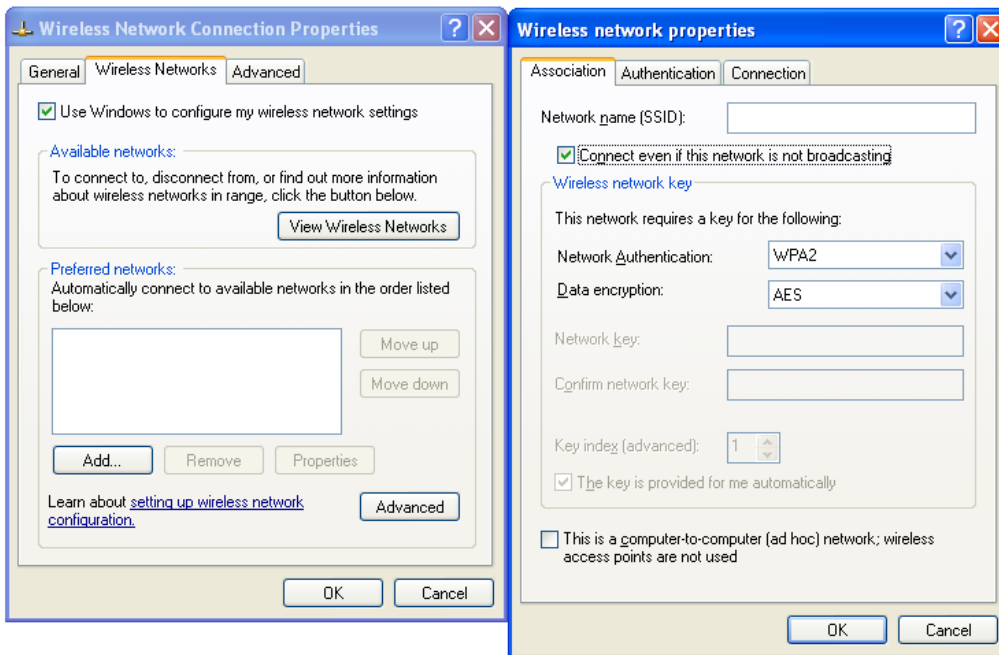
Eduroam for Windows XP

This manual is written for an English version of XP according to BTH standard.

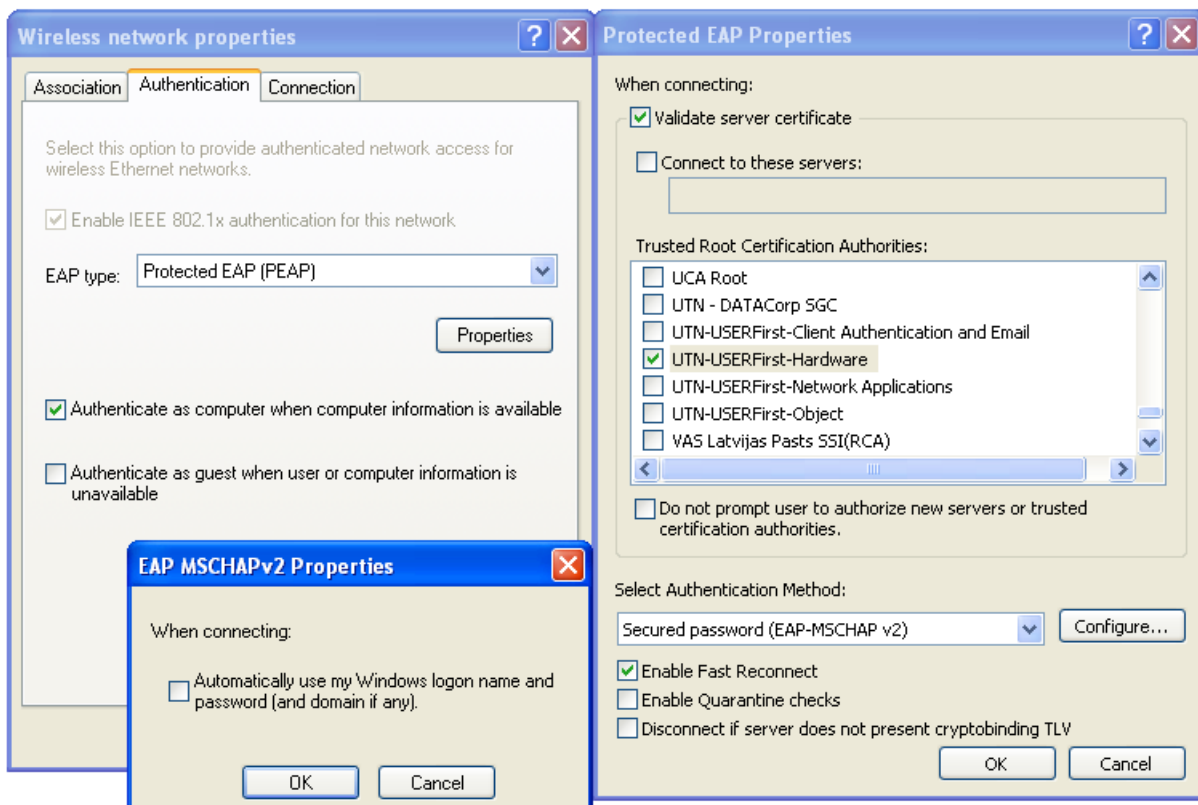
1. Go to Start -> Control Panel -> Network Connections
2. Right click on the wireless network icon, and choose "Properties"



3. Choose the tab "Wireless Networks" and then "Add".
4. Fill in "SSID" *eduroam* and "Network Authentication" WPA2. "Data encryption" should be AES. Also select "Connect even if this network is not broadcasting"



5. Under the tab "Authentication" choose "EAP type" = Protected EAP (PEAP) and then "Properties". In this window choose **UTN-USERFirst-Hardware** and **AddTrust External CA Root** in the scroll down menu.
6. Click "Configure" and unselect "Automatically use my Windows logon name and password (and domain if any)" if you are not logged in with your AD account. Click OK in the 4 windows that are open.



7. At the bottom right, left of the wireless network icon, a yellow text box will show up with the heading "Wireless Network Connection". Click on it, and a login window will appear. "User name" is your user id followed by *@ad.bth.se* eller *@students.ad.bth.se*. "Password" is your AD domain password. Then click OK.

