

# Archipelago Sea Biosphere Reserve



Katja Bonnevier

Coordinator

[katja.bonnevier@aboland.net](mailto:katja.bonnevier@aboland.net)





United Nations Educational,  
Scientific and Cultural Organization



# Unesco – Man and Biosphere Program (MAB)

*“special places for people and nature”*

- was established in the early 1970s by UNESCO
- a MAB secretariat provided by Division of Ecological and Earth Sciences at Unesco



# The world network of Biosphere reserves

- includes 507 biosphere reserves in 102 countries
- as learning laboratories for sustainable development
- linking Science and Society in the management of the areas
- a periodic review every 10 years



# MAB - Biosphere Reserves

- ◆ are nominated by national governments
- ◆ are not protected areas in themselves or have any legal status
- ◆ are not funded by Unesco
- ◆ organize their own financing nationally



# Biosphere Reserves

- ◆ model areas for sustainable development, conservation of biological diversity, and for the improvement of the relationship between people and their environment globally
- ◆ are areas of terrestrial and coastal ecosystems and even urban ecosystems.
- ◆ are ecologically and culturally valuable areas, with human activity

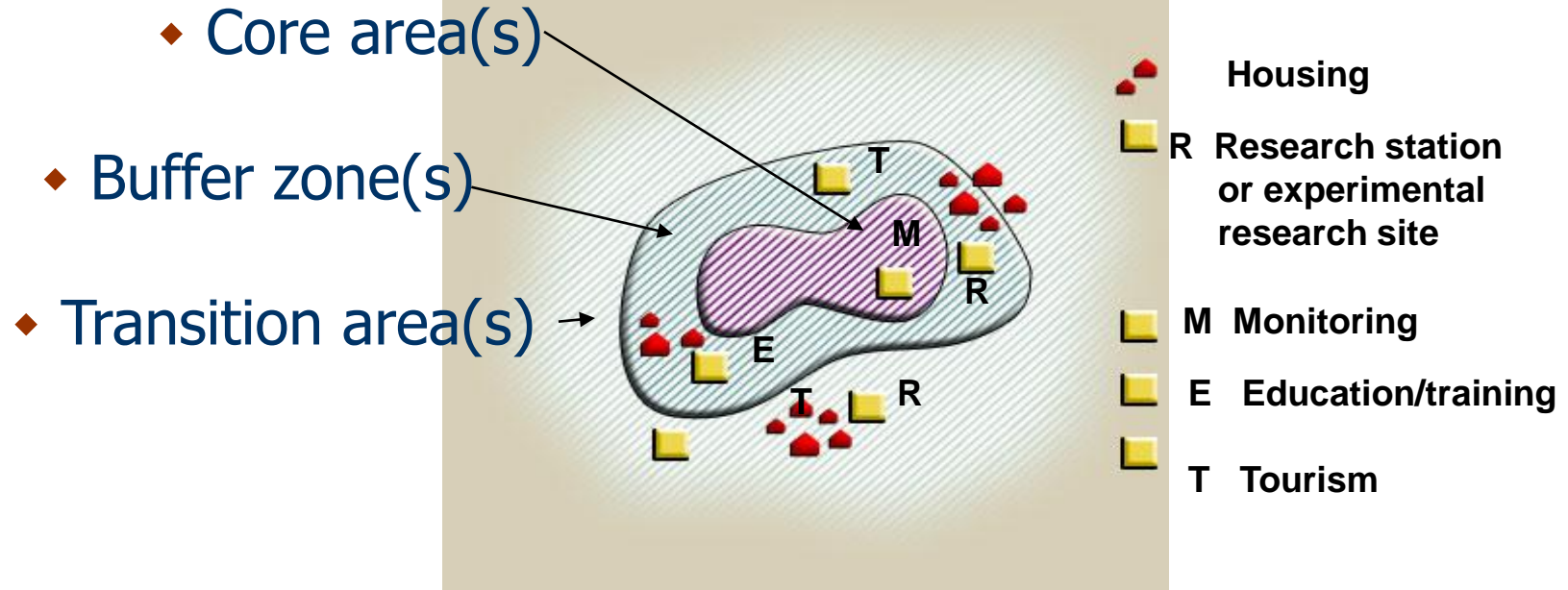


# The three functions of biosphere reserves

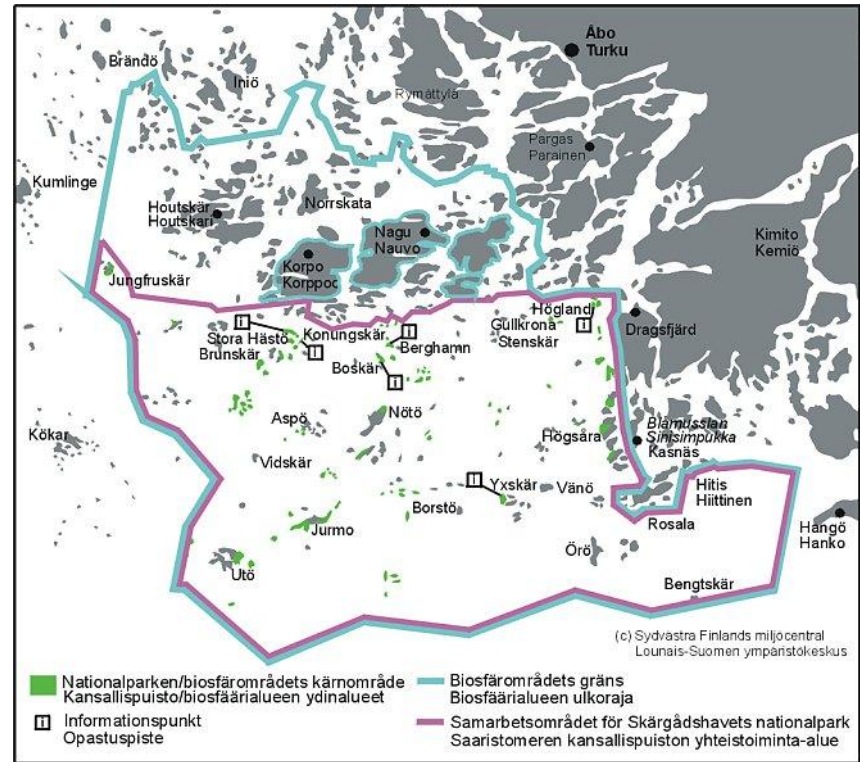
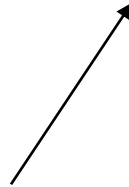
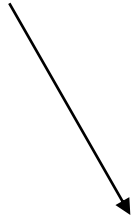
- **conservation** of species, landscapes, ecosystems and genetic resources
- **development** to foster sustainable economic and human development
- **logistic** to support education, training, research and monitoring related to local, regional, national and global issues of conservation and sustainable development

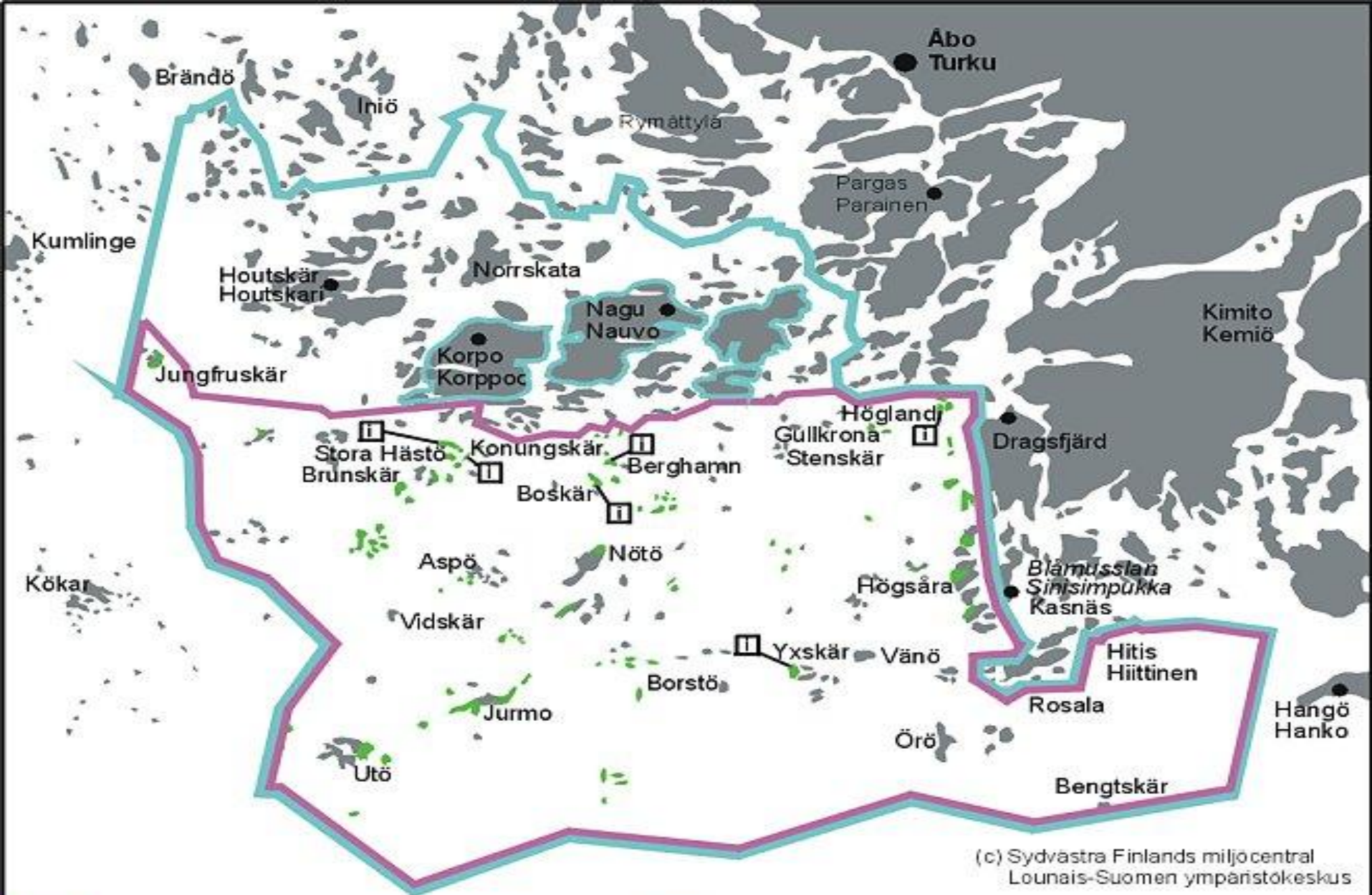


# Biosphere Reserves - How are they organized?





# Location of Archipelago Sea BR, Finland






 Nationalparken/biosfärområdets kärnområde  
Kansallispuisto/biosfäärialueen ydinalueet

 Informationspunkt  
Opastuspiste

 Biosfärområdets gräns  
Biosfäärialueen ulkoraja

 Samarbetsområdet för Skärgårdshavets nationalpark  
Saaristomeren kansallispuiston yhteistoiminta-alue

# Archipelago Sea BR

- Established 1994
- Carried out by the Subregion Åboland together with the Regional Environment Center
- Financed by the Ministry of Environment (50 000€ annually)
- One full-time coordinator
- Headed by a co-operation group (5 members) and a delegation for the outer archipelago (13 members)
- Finnish MAB-IHP committee at the Academy of Finland



# Council of Subregion Åboland

## *Surveillance of subregional interests*

**Economy**

**Environment  
and housing**

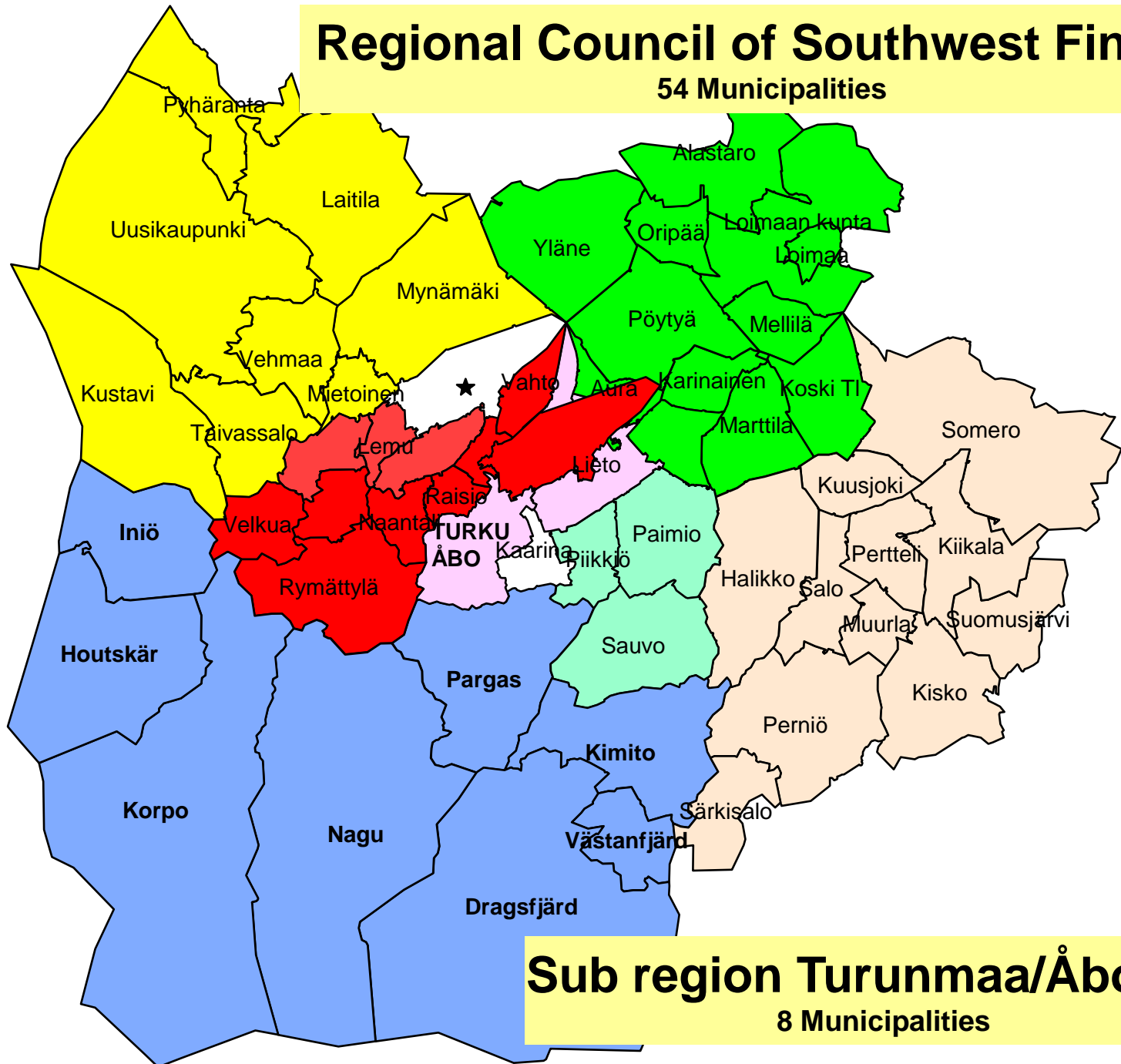
**Co-operation  
between  
municipalities**

**Communications  
and IT**



# Regional Council of Southwest Finland

54 Municipalities



## Sub region Turunmaa/Åboland

8 Municipalities

# Some characteristics of the area

- bilingual, with a majority of the minority of swedish speaking Finns
- islands – fragmented housing and services - long distances - small-scaled
- high amount of summer houses, even second houses for people from the cities



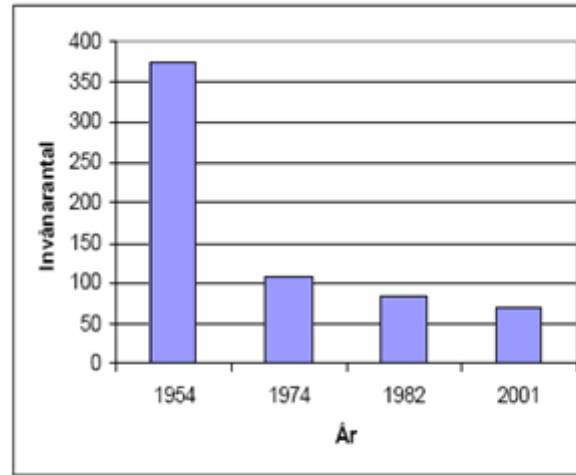
# Man in the archipelago

- Residents; 1100 persons
- Summer inhabitants
- Tourists
- State and municipalities
- Voluntary organisations



# Main socio-ecological challenges

- Eutrophication
- Cultural landscapes
- Oil transports
- Decreasing population



Figur 2. Befolkningsutvecklingen på 25 utskärsöar i Skärgårdshavets biosfärområde 1954-2001 (källa: Hoffström, P. (2003) Utskären – en levande glesbygd. Slutrapport, Region Åboland, 12 s.)



# Activities

1. Different development projects which aim are to combine environmental and cultural, social and economic issues
2. Act as a contact link between regional universities and the subregion
3. International collaboration
4. Arranging seminars of "hot topics"

Collaboration with locals is important



Borstö

# How to link regional development and conservation

- discussion forums with researchers, decisionmakers and other stakeholders
- advisory committee for the area
- development projects with a steering group representing different levels and fields



# Collaborators

- Metsähallitus – Archipelago National Park
- Regional authorities
- Voluntary organisations (WWF, local associations)
- Universities and local schools
- Local people (entrepreneurs, land-owners)



# Projects in sustainable development: cultural landscapes

- jobs for local entrepreneurship
- estetical values
- ecological values
- attractiveness for tourists



Houtskär,  
Berghamn



Houtskär,  
Hamnö



Korpo, Lohm



J.  
Tobiasson

# Projects in sustainable development: tourism

- high-class information material of the nature, culture and services of the villages in the outer archipelago
- nature-culture trail
- study of the population development



# International project: Coastal Sustainability as a challenge

- Biosphere reserves and national parks in Finland, Estonia, Latvia, Lithuania, Germany
- The overall goal is to strengthen the cooperation between protected areas in the Baltic region



# Challenges for the coordination of the BR

- Visibility and awareness
- Focusing
- Financing



# Please visit our websites for more information:

- [www.turunmaanseutu.fi/biosphere/](http://www.turunmaanseutu.fi/biosphere/)
- [www.unesco.org/mab/](http://www.unesco.org/mab/)

