

# Import references to DiVA

Updated 2013-09-16

<http://diva.ub.uu.se/helpdesk>

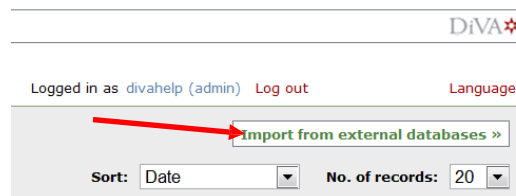


You can import references from many different databases and reference management programs into DiVA. The following reference formats can be used: PubMed XML, ISI, EndNote XML, Endnote Referer Format, MODS v.3, BibTex, BibLatex and RIS.

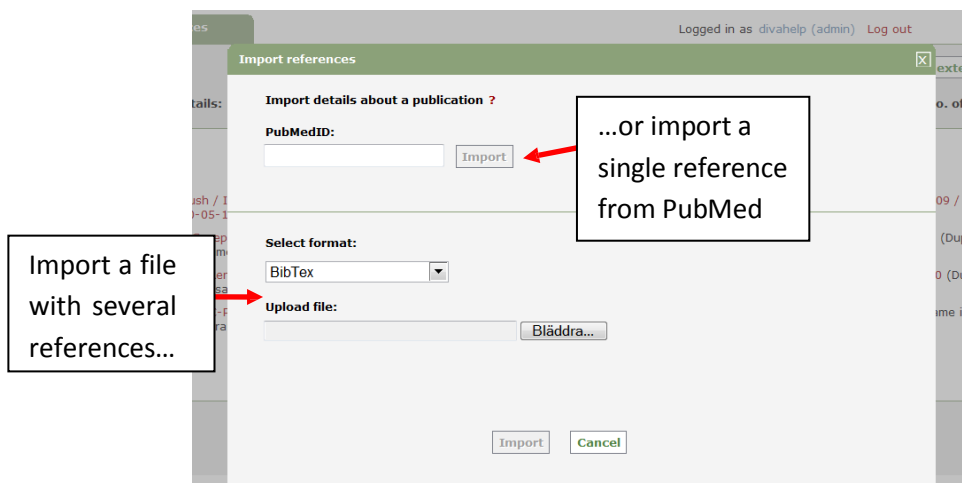
**As of January 2016 the library imports new publications from the Web of Science (ISI) database and the Scopus database to DiVA on a monthly basis. Departments are responsible for registering publications in DiVA, which are *not* in Web of Science or Scopus.**

## How to import

1. Search references in a database (e.g. PubMed, Web of Science, Scopus, Libris) or a reference management program (e.g. EndNote) and save the results as a file on your computer.  
→ See instructions below in the section *Alternatives for importing*
2. Log into DiVA <https://bth.diva-portal.org> with your University account and password A and select *Import references*.
3. Click the button *Import from external databases*.



4. Select format, upload and import your saved file with references. You can also import a single reference from PubMed using its PubMedID (PMID).



The reference or references that you have imported are displayed under *List imported details*.

Uppsala University Library | DiVA Helpdesk | DiVA Search | Help DiVA

Import references Logged in as divahelp (admin) Log out Language

← Back Import from external databases »

List imported details: ? Sort: Date No. of records: 20

**1 - 3 of 3**

Jansson, O / Mortality Trends in Subjects With and Without Diabetes During 33 Years of Follow-up / 2010 / Artikel i tidskrift / 2010-05-07

Craddock, Nick / Genome-wide association study of CNVs in 16,000 cases of eight common diseases and 3,000 shared controls / 2010 / Artikel i tidskrift / 2010-05-07

Hagberg, E / Vascular endothelial growth factor B controls endothelial fatty acid uptake / 2010 / Artikel i tidskrift / 2010-05-07 (Duplicate. A record with the same identifier was already registered in DiVA when this record was imported.)

**1 - 3 of 3**

← Back

X remove a reference from the list

→ “Duplicate...” means that there already is a publication with the same DOI, ISI-id or PubMed-id in DiVA. Click on the reference if you want to edit the existing details that have been registered.

5. Click on each reference to add the **organisational affiliation and the full first name for all Uppsala university authors**, as well as any other details according to the Quick Reference Guide called [Register/Publish in DiVA](#). Continue to the step *Review/Publish* and click *Submit* to publish the reference in DiVA. References are visible immediately in DiVA, however full text files and/or other attachments are checked by a librarian before they are published in DiVA.

References that you have imported to DiVA but have not yet edited and/or submitted will appear under *List imported details* the next time you log in.

## Alternatives for importing

(click on a heading to go to the section)

- A. Import a single reference from PubMed
- B. Import a file with several references from PubMed
- C. Import a file with several references from Web of Science (ISI)
- D. Import a file with several references from EndNote
- E. Import a file with several references from many other DiVA databases (e.g. other universities or organisations)
- F. Import a file with several references from many other databases (e.g. Scopus, Libris...)

### A. Import a single reference from PubMed

Fill in the publication's PubMed ID (PMID) and click *Import*.

Import references

Import details about a publication ?

PubMedID:  
14695825 Import

Select type:  
PubMed XML

You will find the PMID for your publication in PubMed:

J Med Chem. 2004 Jan 1;47(1):110-22.  
PMID: 14695825 [PubMed - indexed for MEDLINE]  
[Related Articles](#)

### B. Import a file with several references from PubMed

Do a search in PubMed and mark the records in the list that you want to import. Select *File* and *XML* under *Send to* and save the file on your computer.

Display Settings: Summary, 20 per page, Sorted by Recently Added

Send to: Filter your results:

Results: 1 to 20 of 340149 Selected: 4

1. [Diabetes-related changes in auditory brainstem responses.](#)  
Konrad-Martin D, Austin DF, Griest S, McMillan GP, McDermott D, Fausti S.  
Laryngoscope. 2009 Nov 10. [Epub ahead of print]  
PMID: 19904812 [PubMed - as supplied by publisher]  
[Related articles](#)

2. [Highly Active State of Autoimmune Pancreatitis With Mikulicz Disease.](#)  
Kubota K, Wada T, Kato S, Mozaki Y, Yoneda M, Fujita K, Takahashi H, Inamori T, Kirikoshi H, Saito S, Inayama Y, Nakajima A.  
Pancreas. 2009 Nov 9. [Epub ahead of print]  
PMID: 19904224 [PubMed - as supplied by publisher]  
[Related articles](#)

Choose Destination

File  Clipboard

Collections  E-mail

Order

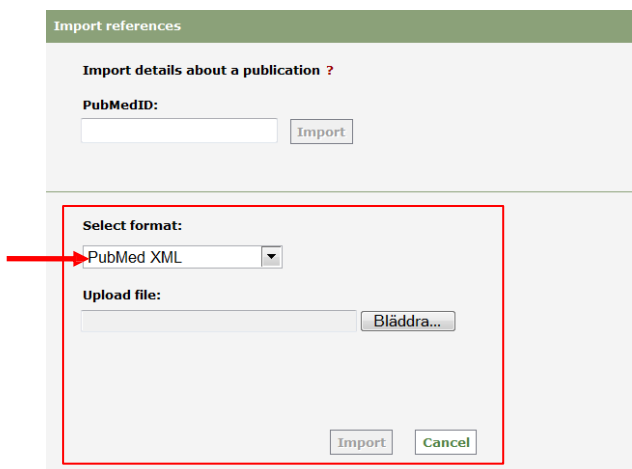
Download 4 items.

Format  
XML

Sort by  
Recently Added

Create File

To import the file into DiVA select *PubMed XML* under *Select format*. Click *Browse* (Bläddra) in order to locate the right file on your computer and upload it to DiVA. The file is called *pubmed\_result.txt* unless you gave it another name. Then click *Import*.



Import references

Import details about a publication ?

PubMedID:  Import

Select format: PubMed XML

Upload file:  Bläddra...

Import Cancel

### C. Import a file with several references from Web of Science (ISI)

Do a search in [Web of Science](#) (via ISI Web of Knowledge) and mark the records in the list that you want to import. Go to *Send to* (at the bottom of the page), select *Other File Formats* from the drop down list.

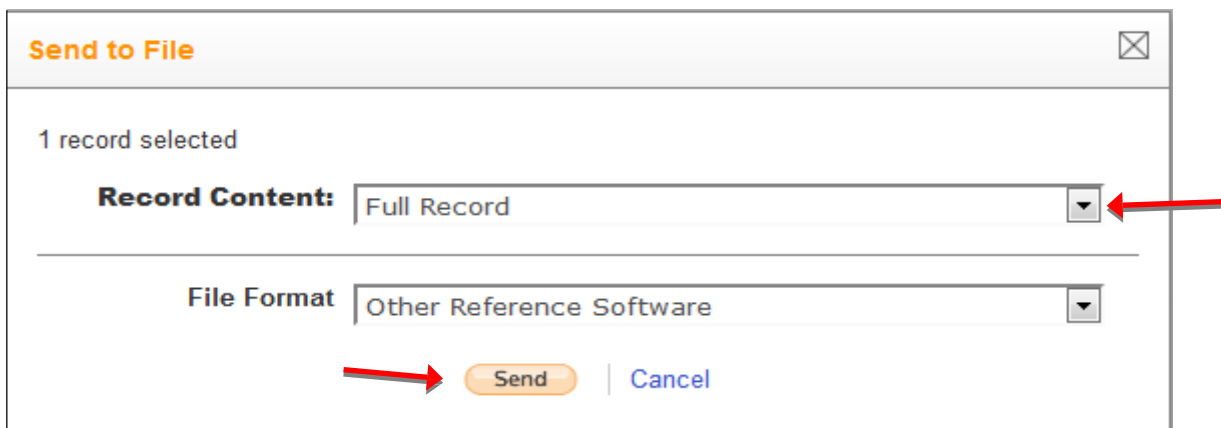


Title: Ambivalence: Its development, mastery, and role in psychopathology  
Author(s): Corradi, Richard B.  
Source: BULLETIN OF THE MENNINGER CLINIC Volume: 77 Issue: 1 Pages: 41-69 Published: WM 2013  
Times Cited: 0 (from Web of Science)  
[ Update US ] [ View abstract ]

Select Page Add to Marked List (0) [ Print ] [ Email ] Send to: Other File Formats

579 Show 10 per page Page 1 of 4,658 Go Sort by: Publication Date -- newest to oldest

A window will open. Select *Full Record* from the drop down list for **Record Content**. The pre-selected **File Format** is *Other Reference Software*. Click on the *Send* button to save the file on your computer.



Send to File

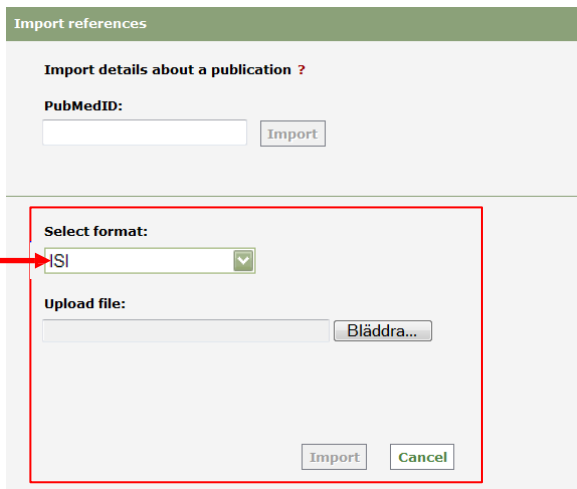
1 record selected

Record Content: Full Record

File Format: Other Reference Software

Send Cancel

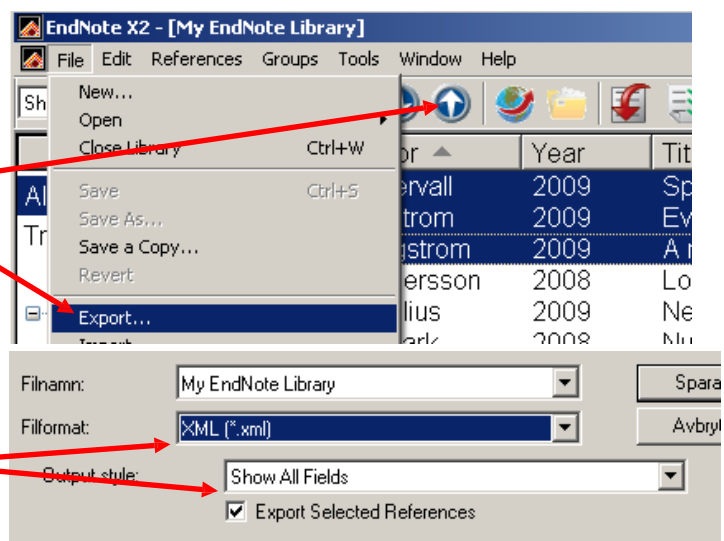
To import the file into DiVA select *ISI* under *Select format*. Click *Browse* (Bläddra) in order to locate the right file on your computer and upload it to DiVA. The file is called *savedrecs.txt* unless you gave it another name. Then click *Import*.



#### D. Import a file with several references from EndNote

Open EndNote and mark all the references you want to import.

Select *File > Export...* or click the Export button.



Select *File format = XML* and *Output style = Show all fields*. Save the file on your computer.

To import the file into DiVA select *EndNote XML* under *Select format*. Click *Browse* (Bläddra) in order to locate the right file on your computer. The file is called *My EndNote Library.txt* unless you gave it another name. Then click *Import*.

Importera uppgifter

Importera uppgifter om publikation ?

PubMedID:

Välj format:

Endnote XML

Ladda upp fil:

#### E. Import a file with several references from other DiVA databases (e.g. from other universities or organisations)

1. Search for your publications in the other university's DiVA. Mark the references that you want to import.
2. Click on the link called References, then Export references and right-hand click on the reference format Mods and select Save the file on your pc.
3. Log on to UU:s DiVA, select *Import references* and click on *Import from external databases*.
4. Select the format MODS V3, upload and import your file.

Import references

Import details about a publication ?

PubMedID:

Select format:

MODS V3

Upload file:  Ingen fil är vald.

5. Click on each individual reference and add your UU User-id. Confirm that all the other information is correct and *Submit*. **Note: Do not change the Organisation (Department, Unit or Programme) details. These should reflect the affiliation information in the original article.**

## **F. Import a file with several references from many other databases (e.g. Scopus, Libris...)**

You can import references from many other databases and reference management programmes into DiVA by importing them in one of the formats BibTex, BibLatex, RIS, Endnote Referer or MODS. BibTex is a common reference format which is offered by many databases.

Make sure that you select the correct reference format under *Select format* when you upload your file to DiVA.