

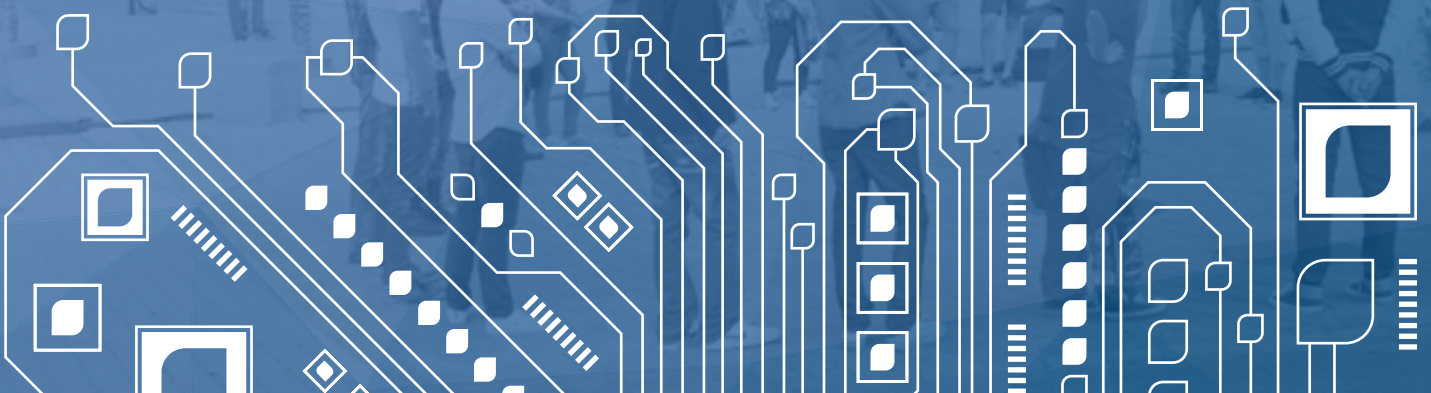


BLEKINGE INSTITUTE OF TECHNOLOGY

BTH

STUDY AT BTH 2020

BIBLIOTEK





WELCOME TO BLEKINGE INSTITUTE OF TECHNOLOGY, BTH

Blekinge Institute of Technology, BTH, has a distinctive focus on IT and innovation for sustainable growth.

We conduct education and research at a high international level, focusing on IT integrated with other subjects such as engineering, industrial economics, spatial planning, design, and health sciences.

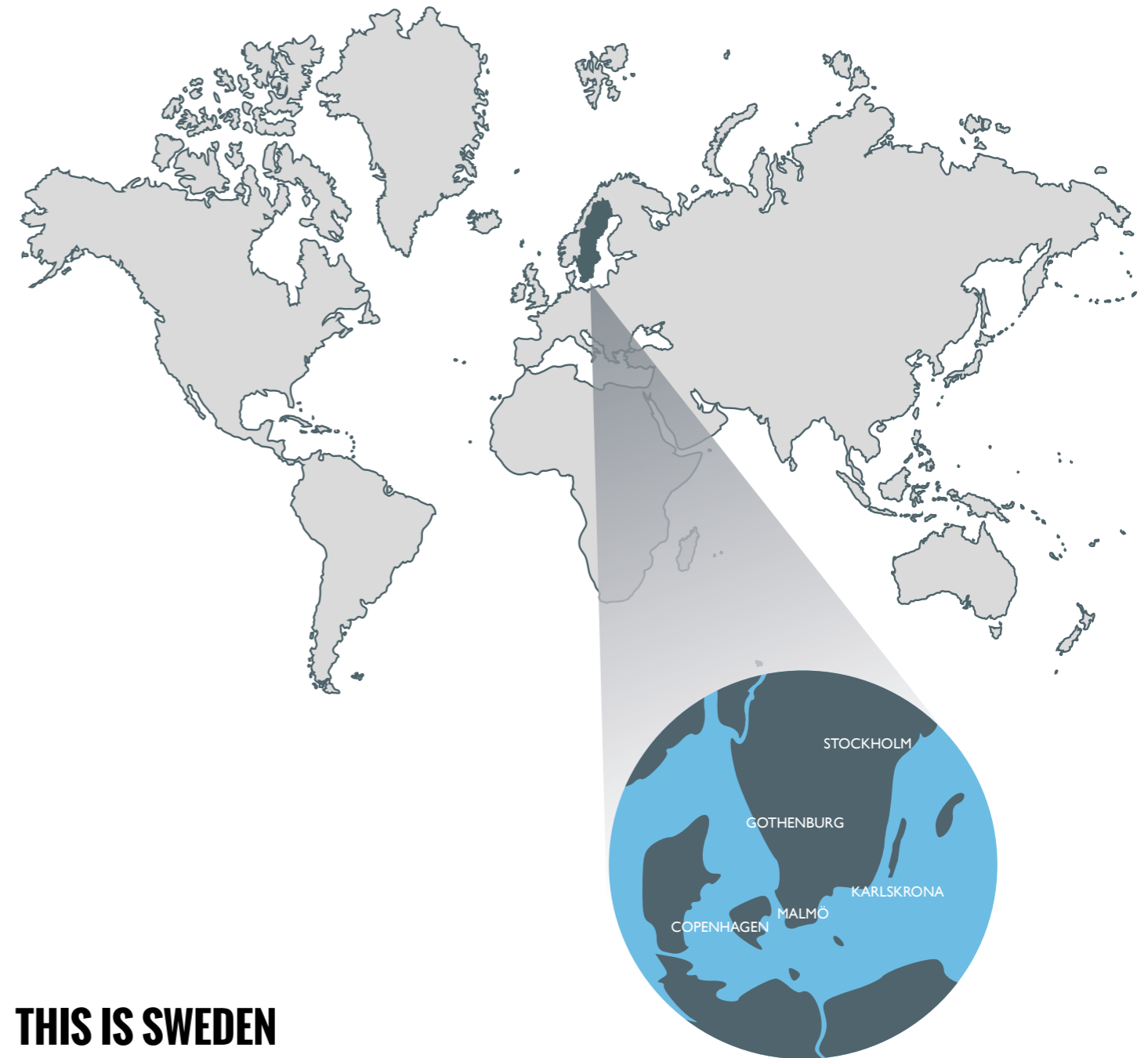
BTH invests in professionally oriented study programmes of high quality and offer courses and study programmes that prepare the student to face societal challenges. In all study programmes and activities we highlight innovation, sustainability as well as collaboration and exchange with industry and society.

The aim of our research is to contribute with solutions to both short- and long-term societal challenges. Our teaching staff are able to focus on research while actively participating in undergraduate education.

The city of Karlskrona, where our main campus is located, was founded in 1680. Today, 300 years later, the naval tradition lives side by side with the city's strong IT sector and innovation activities. The city is listed as a World Heritage Site by UNESCO. Karlshamn, where our other campus is situated, has one of the largest ports in Sweden. It is also a town with many cultural gems and well-preserved buildings that reflect its colourful past.

You will find it easy to adapt to your new surroundings since everyone communicates easily in English.

Welcome to BTH and a lifelong experience!



THIS IS SWEDEN

For a sparsely populated country in the far north of Europe, Sweden has done remarkably well in establishing and maintaining an outstanding reputation abroad.

Sweden is a part of Scandinavia and the third largest country in Western Europe – almost the same size as Spain or France, and bigger than California, USA. Sweden is, however, a small country in terms of population, with only 10 million inhabitants – which is about 0.1% of the world population.

Today Sweden is one of the strongest economies in the world offering a high quality of life in a modern welfare society. It is a rich and well-educated country with large annual investments in education and

research. Sweden has become a multicultural country over the past fifty years. The official language is Swedish, but almost all Swedes are able to communicate in English.

A focus in the development of Swedish society has been on the environment. One reason for this is the Swedish population's emotional affinity with nature.

HIGHER EDUCATION IN SWEDEN

All higher education in Sweden is provided by state-run higher education institutions or by self-governing, independent institutions that have an agreement with the state.

There are 35 higher education institutions in Sweden. Their three principal missions are teaching, research and external engagement. The state is responsible for providing higher education in Sweden. The Swedish Parliament and the Government decide on regulations and the allocation of basic funding.

The Swedish higher Education Act stipulates that higher education must have an academic or artistic basis and must be founded on tried and tested experience. All higher education must be of high quality. Universities are responsible for continually developing the quality of their programmes and for providing quality assurance. Standards are maintained via regular audits by the Swedish Higher Education Authority.

The Government stipulates which qualifications may be awarded by whom as well as the specific requirements for those qualifications.

Higher education institutions have a Board of Governors and a Vice-Chancellor. The Vice-Chancellor is appointed by the Government.

Sweden has a system of credits in which a full-time academic year of 40 weeks corresponds to 60 credits. The system is compatible with the European Credit Transfer System (ECTS). The academic year is divided into two semesters – autumn semester and spring semester.

All courses and study programmes are placed within one of three cycles: Bachelor, Master or PhD. After completion of their studies, students can apply for a degree certificate. A diploma supplement in English describing the qualification, cycle and learning outcomes is issued automatically together with the degree certificate.



HIGHER EDUCATION AT BTH

BTH offers student centered and research based education with clear links to wider society emphasising creativity, independence, initiative and entrepreneurship.

Our goal is that our courses and study programmes will give students opportunities to build a career within their chosen field. Our focus is not only on what happens during the studies, but also what happens after. Therefore, many of our courses and programmes include projects tied to real life demands and are conducted together with industry. This way, the students will gain insight into their future profession and contacts with potential future employers already during their studies.

Among the 5 400 registered students at BTH, there are currently more than 560 international students. Most of these students apply for our Master's programmes offered in English. The students, together with the staff, represent around 70 different countries.

BTH works proactively with internationalisation at home (IaH). To enhance our multicultural environment we develop study programmes with an international focus. Our study programmes co-operate with important bodies in the surrounding region (companies, municipalities, etc) and by organising social activities to enhance our multicultural environment.

BTH makes the most of being a small university. Our students quickly get to know one another, and the study groups are small. Students can easily get in contact with teaching staff and other employees. This creates a rewarding, interesting and safe study environment.





FACTS ABOUT BTH

- Around 5 400 students.
- Around 560 international students.
- Around 115 PhD students.
- Around 455 employees.
- Around 45 professors.
- 36 percent of students are women.
- 66 percent of students are at the Faculty of Engineering.
- 34 percent of students are at the Faculty of Computing
- BTH has two campuses, located in Karlskrona and Karlshamn. The main campus is situated in Karlskrona.
- Offers 11 Master's programmes taught in both English and Swedish
- Offers 19 Bachelor's programmes taught in Swedish.
- Around 10 PhD programmes.
- One third of BTH's activities are research and research studies.
- No tuition fees for students from the European Union (EU) or European Economic Area (EEA).
- BTH offers scholarships for non-EU/EEA students.
- The libraries at BTH are based on information technology and offer their services to all students.
- BTH co-operates with around 70 European partner universities within the European Erasmus programme.
- BTH has around 35 bilateral agreements with universities all around the world.

INTERNATIONAL MASTER'S PROGRAMMES AT BTH 2020

MASTER'S PROGRAMME IN MECHANICAL ENGINEERING – STRUCTURAL MECHANICS

120 credits

Contribute to advanced product development or conduct research in mechanical engineering. Master a coordinated method of working with all the angles of the development process, and acquire capacity for performance prediction that ensure new products achieve their intended function.

Programme manager: Ansel Berghuvud
Email: ansel.berghuvud@bth.se

MASTER'S PROGRAMME IN TELECOMMUNICATION SYSTEMS

120 credits

Build the knowledge to create the systems of future computer communication. Immerse yourself into the world of computer networks, the internet, mobile systems, cloud communications and other communications systems – study possibilities, face challenges, and improve performance.

Programme manager: Patrik Arlos
Email: master.telecom@bth.se

MASTER'S PROGRAMME IN COMPUTER SCIENCE

120 credits

Get a wide spectrum of knowledge in computer science within one of three directions – IT security, Intelligent Systems, and Distributed and Parallel Systems. The studies are focused on research preparation and you can immerse deeper into one specific area by choosing courses to custom fit your degree.

Programme manager: Marie Netz
Email: master.computerscience@bth.se

MASTER OF SCIENCE PROGRAMME IN SOFTWARE ENGINEERING

120 credits

Acquire the skillset to develop large scale software systems through all development phases from initial planning to delivery and maintenance. Understand and train how to ensure quality in both the development process and the developed software products. Fine tune your degree with elective courses.

Programme manager: Mikael Svahnberg
Email: masterssoftwareengineering@bth.se

MBA PROGRAMME

60 credits

Improve your competencies by developing skills in leadership, strategy and finance. Together with your engineering degree new career paths are enabled by completing this programme at BTH.

Programme manager: Henrik Sällberg
Email: henrik.sallberg@bth.se

MASTER'S PROGRAMME IN SPATIAL PLANNING

60 credits

Advance your undergraduate studies by specialising in planning and preparing for work in multidisciplinary planning projects. Acquire a deep understanding of spatial planning by immersing yourself in its various challenges, and examining its outcomes and impacts in different contexts.

Programme manager: Lina Berglund Snodgrass
Email: lina.berglund-snodgrass@bth.se

MASTER'S PROGRAMME IN STRATEGIC LEADERSHIP TOWARDS SUSTAINABILITY

60 credits

Become a leader that strengthens organisations and promotes sustainable development of societies. Within two themes – Strategic Sustainable Development and Leading in Complexity – you study how you with science based methodology can contribute to sustainable development by enabling change in complex systems.

Programme manager: Merlina Missimer
Email: merlina.missimer@bth.se

TEACHING METHODS:

Lectures

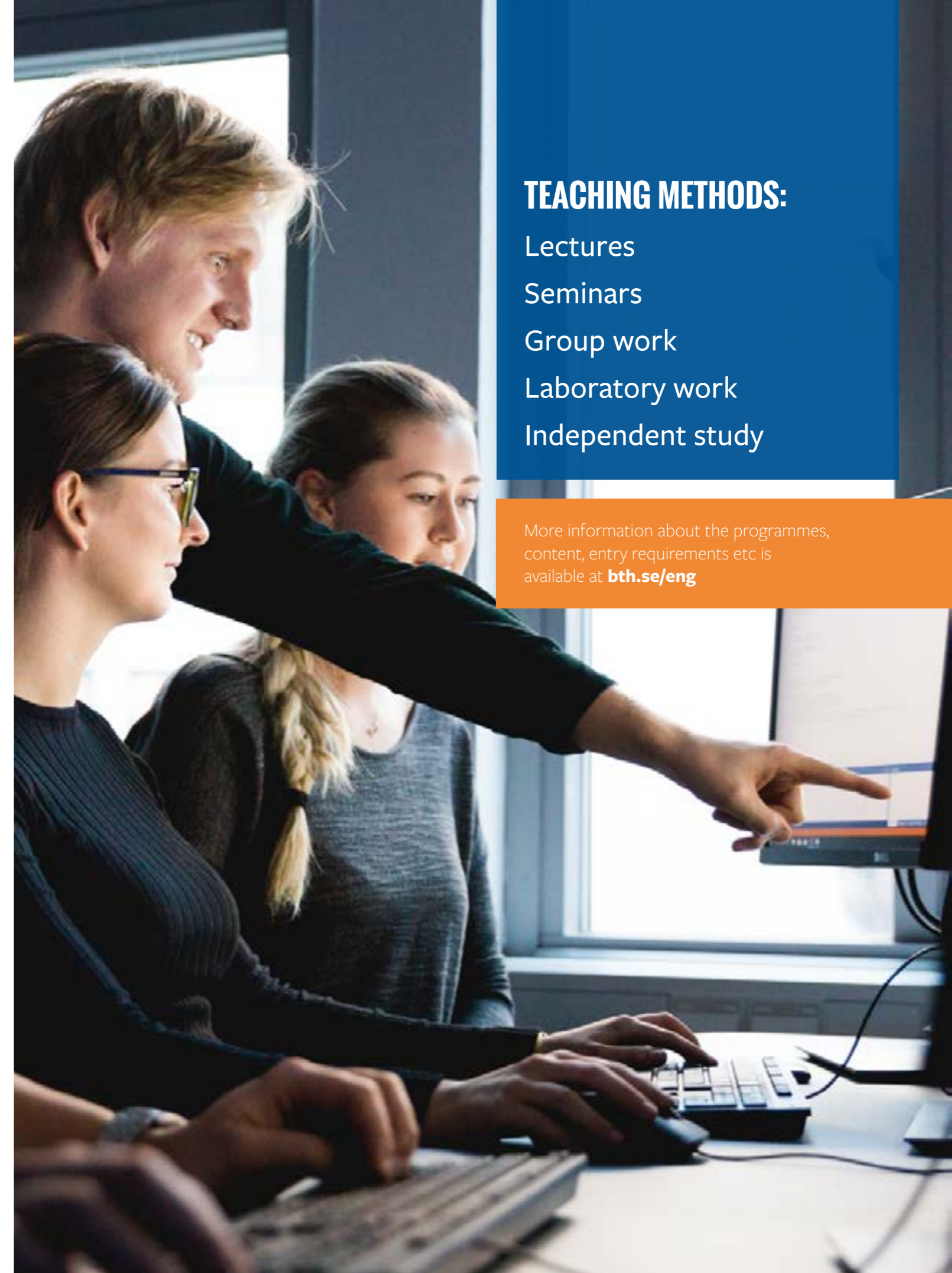
Seminars

Group work

Laboratory work

Independent study

More information about the programmes, content, entry requirements etc is available at bth.se/eng





TRANSPORTATION CENTER

KARLSKRONA CITY

STUDENT ACCOMMODATION

BTH CAMPUS

KARLSKRONA

INSPIRING STUDY ENVIRONMENT

BTH's campus in Karlskrona are located by the sea, which creates a special atmosphere. On campus there are of course lecture halls and libraries, but also restaurants and cafes, student housing, a students' union, and the unique opportunity to swim in the sea; in other words – an inspiring study environment.

RESEARCH

BTH's research is of great relevance and impact, and our findings provide significant contributions in the form of knowledge and innovations to solve the challenges society is facing.

The research at BTH is conducted at two faculties within the fields of engineering, IT, spatial planning, industrial economics, design and health sciences. Despite its relatively small size, BTH has a great deal of research. Today, research and research studies account for more than one-third of our activities and we intend to increase that share even further. We conduct research in a large number of fields all connected by applied IT, which researchers approach from different perspectives.

Strong research environments in urgent fields

At BTH there are three research environments with long term funding from the Swedish Knowledge Foundation (KKS):

- One focuses on creating resource efficient systems for the analysis of large amounts of data. The research is conducted in cooperation with a number of companies including Ericsson, Telenor and Sony Mobile Communications.
- The other research environment focuses on the production of digital methods and tools to develop the next generation of sustainable products in the manufacturing industry. The research is carried out in collaboration with a number of companies e.g. Volvo, Tetra Pak and GKN Aerospace.

- The third focuses on developing new working methods and methods so that Swedish companies can develop future software intensive products and services in a competitive way. The research is carried out in collaboration with Ericsson, Sony, Telia Company, Handelsbanken, Swedbank, MaxKompetens, Time People Group, Tolpagorni Product Management, QTEMA and Fortnox.

In addition, BTH runs a major project, funded by the Knowledge Foundation, aimed at developing visual and interactive systems focusing on the human being. The project is conducted in collaboration with WIP, Ericsson, Axis Communications and Tobii Pro.

PhD programmes

Whether you want to deepen your studies or boost your career opportunities, BTH offers several PhD programmes to help you.

In 1999, after a positive evaluation by the Swedish Higher Education Authority, BTH was granted the right to give PhD programmes in engineering. Today we run PhD programmes in "IT with applications" and "Planning and Management".

BTH also offers PhD programmes in other subject areas in collaboration with other universities in Sweden.

EXTERNAL ENGAGEMENT

BTH is a modern and open university which is easy to work with. We collaborate with wider society and is a driving actor both regionally and nationally.

What distinguishes BTH is its close cooperation with industry and society which permeates both education and research at the regional, national and international levels. We think it is important that both education and research are conducted in collaboration with wider society. It increases the students' connections to professional life during their studies and makes them more attractive in the labour market after graduation. When we cooperate with surrounding society we can better contribute to solving the challenges facing society.

Strategic collaboration

BTH has strategic collaboration partners. These include e.g. a number of internationally active business partners such as Volvo, Ericsson, Telenor, NKT, Region Blekinge and The Swedish Armed Forces.

Collaboration with industry and society

- BTH is collaborating with Ericsson, Telenor and Sony Mobile Communications in creating resource efficient systems for the analysis of large amounts of data.
- BTH collaborates with several companies to implement strategic sustainability thinking in their innovation processes.
- BTH conducts research in close collaboration with industry to support Swedish software intensive companies in their efforts to efficiently manage sourcing. The results have been developed in collaboration with Ericsson, DXT Technologies, Telenor and Spotify.

WORLD CLASS RESEARCH

- BTH is among the world's most outstanding higher education institutions within software engineering and sustainable development. In systems and software engineering, BTH is ranked sixth in the world and first within the EU, according to the Journal of Systems and Software.
- BTH is deemed to be the best in Sweden and in third place within Europe for sustainable development,

according to a report from the Alliance for Global Sustainability.

- BTH has one of its computer science researchers is on the Royal Swedish Academy of Engineering Sciences, IVA's 100 list. The list presents research that can form the basis of innovation in the form of new companies, new products and services, business development or other form of benefit.



USEFUL INFORMATION

Right of residence

EU/EEA citizens are exempted application and tuition fees. As an EU/EEA citizen you have the right of residence in Sweden, which includes that you may study without a residence permit. However, you must register with the Swedish Migration Agency no later than three months after entering the country. The application form is available at the Swedish Migration Agency. If you have any questions, they can be answered by the Swedish Migration Agency. Remember to bring your European Health Insurance Card.

Students that are citizens of countries outside the EU/EEA and plan to study in Sweden more than three months must apply for a residence permit at the Swedish embassy or consulate-general in their home country. The Notification of Selection Results received on University admissions is a valid letter of acceptance and must be submitted with the residence permit application.

NOTE! If you are required to pay tuition fee, you need to pay the entire fee for the first semester in advance in order to obtain a residence permit. BTH is required to notify the Swedish Migration Agency when the payment has arrived in order for them to be able to grant students their residence permits.

Make sure that you apply for a residence permit immediately after receiving the Notification of Selection Results. The application form is available at the Swedish Migration Agency. If you have any questions regarding your residence permit application, these can only be answered by the Swedish Migration Agency or the Embassy where you submitted your application. If this application process is delayed and you do not manage to arrive at BTH within the deadline for arrival, you must contact the department responsible for your study programme in order to keep your study place. Some study programmes have different deadlines, so make sure you find out what applies to your programme. If you arrive too late, you may be denied entry to start your studies. You will find contact information in your welcome letter published on the programme website.

All exchange students receive a Letter of Admission from BTH. This document is a valid letter of acceptance and must be submitted with the residence permit application.

Student health insurance

BTH offers extensive health insurance and national regulations give many international students access to Swedish health care. However, it is your responsibility as a student to make sure that you are covered by adequate health insurance or entitled to Swedish health care during your time in Sweden and at BTH. Below follows a brief summary of the existing insurance coverage together with the terms for access to the Swedish health care system.

Depending on a student's residence permit, admission or citizenship, there are different categories of student health insurance at BTH. Below you find a description of each category:

1. Exchange students (students accepted to an exchange programme at BTH) are covered by a collective health insurance financed by BTH. The terms for the insurance are available from Kammarkollegiet, kammarkollegiet.se.
2. EU/EEA citizens are entitled to access public medical services if they are registered at the social insurance office in their home countries. All persons registered at the social insurance office will be issued a European Health Insurance Card (EHIC). In order to receive medical attention in Sweden, EU/EEA citizens need to bring this card with them.
3. Students staying at BTH for 12 months or more, who have a valid residence permit to prove this, are entitled to the national registration at the Swedish Tax Agency. This registration requires all new students to visit the Swedish Tax Agency as soon as they arrive in Sweden, in order to receive a Swedish personal identity number. With national registration, international students have access to health care in Sweden at the same cost as Swedish citizens.
4. Students staying in Sweden for less than 12 months will be covered by a collective health insurance financed by BTH. The terms for the insurance are available from Kammarkollegiet, kammarkollegiet.se.

Ana Maria from Romania



“BTH was a great experience and what I enjoyed the most was how open-minded people were. The students and teachers made me feel welcome and that I was truly a part of the educational system in Sweden. Coming from a different kind of educational system, for me this felt like a big opportunity.

I applied to BTH because I heard it had one of the best programmes in my field, spatial planning. Also some of my friends have been here before and I have heard only good things about BTH and Karlskrona.

The education here helped me expand my views on the profession I choose and how it is done in a totally different system, which for me is very helpful as I plan on working around the world.

For me, living in Sweden/Karlskrona is very different from back home. There is a totally different culture here, but I'm not saying it in a bad way. I like living here; everything is more calm, more relaxing. I enjoy the fact that Sweden has a lot of outdoor areas where you can take a walk and enjoy the beautiful views. The weather is a bit tricky and sometimes it was too cold for me, but eventually I got used to it”.

Kevin from France



“My home university is located in Paris. Here at BTH there are not too many students which is a good thing in my opinion. Also, the university offers an excellent working atmosphere. I really like the colourful library. Furthermore, the campus is well situated near the water which offers a

very nice panoramic view. Many events are organised by and for students, which is always good if you need a break from classes.

I first applied to BTH because of its courses in software engineering. This is the first partnership year between my home university (ECE Paris) and BTH, and I wanted to be the first guy from there to study here and give future students my feedback.

I really enjoy the courses at BTH. The teachers are available for you to ask many questions, whether it be in class or by email.

Sweden is a really beautiful country. It has always appealed to me so when I got the opportunity to spend another semester abroad, I immediately jumped at the chance!

I think Karlskrona is charming because of its size which I really like. It's so tiny but in a good way. I live near the centre so almost everything is in reach with a stroke of a paddle, if you know what I mean.

The only thing I don't like is the weather. Some days, it can be really windy and cold but maybe it's because I'm used to living in a tropical climate”.

Ehsan from Iran



“There are so many great things about BTH. It is really hard, and somehow impossible, to pick a favourite. I particularly love the location and the atmosphere. It's stunningly beautiful; it motivates you to do more!

BTH is well-known for its applied IT and innovation. That was more than enough for me to apply here.

I have to say, I'm quite satisfied with the way they teach here. The courses are really demanding and the lecturers are tough. I gained more experience here than I ever imagined I could.

Karlskrona is a beautiful city. It's so peaceful. I'm enjoying every second of being here. Sweden is great; if you have a chance to live here, you should take it. There are so many things to see and explore”.

THE STUDENTS' POINTS OF VIEW

Magdalena from Poland



“An international society with students not only from Sweden and countries in Europe, but from all over the world. The location and amenities of the campus are also attractive.

One of the main reasons I chose to study here was the great reviews from my friends, who had already been here on an Erasmus programme: They said that it was one of the best options for spatial planning students, if you really want to learn.

My second reason was that I had never been to Sweden before, so it was interesting for me to visit a “new” country. The topics we discuss in class are more or less the same as in Poland. The difference here is that the studies are more practical – conducting projects and trying to find solutions to real problems.

I like the fact that it's a bit different from Poland – it allows me to compare many issues between the two countries.

Karlskrona is a small city, which allows students to integrate more and to get to know each other better”.

“For me, BTH stands for a clear focus on applied research in collaboration with industry. It has given me and my colleagues excellent opportunities to conduct high quality research with high industrial importance in software development”.

Claes Wohlin, researcher in software engineering

OTHER USEFUL LINKS WITH GENERAL INFORMATION ABOUT EDUCATION IN SWEDEN:

- Swedish Institute (SI): www.si.se/en
- Swedish Higher Education Authority: english.uka.se
- Study in Sweden: www.studyinsweden.se
- General information about Sweden: www.sweden.se

CONTACT INFORMATION

Blekinge Institute of Technology
SE-371 79 Karlskrona, SWEDEN
Phone: +46 455 38 50 00
www.bth.se/eng

FOLLOW BTH

